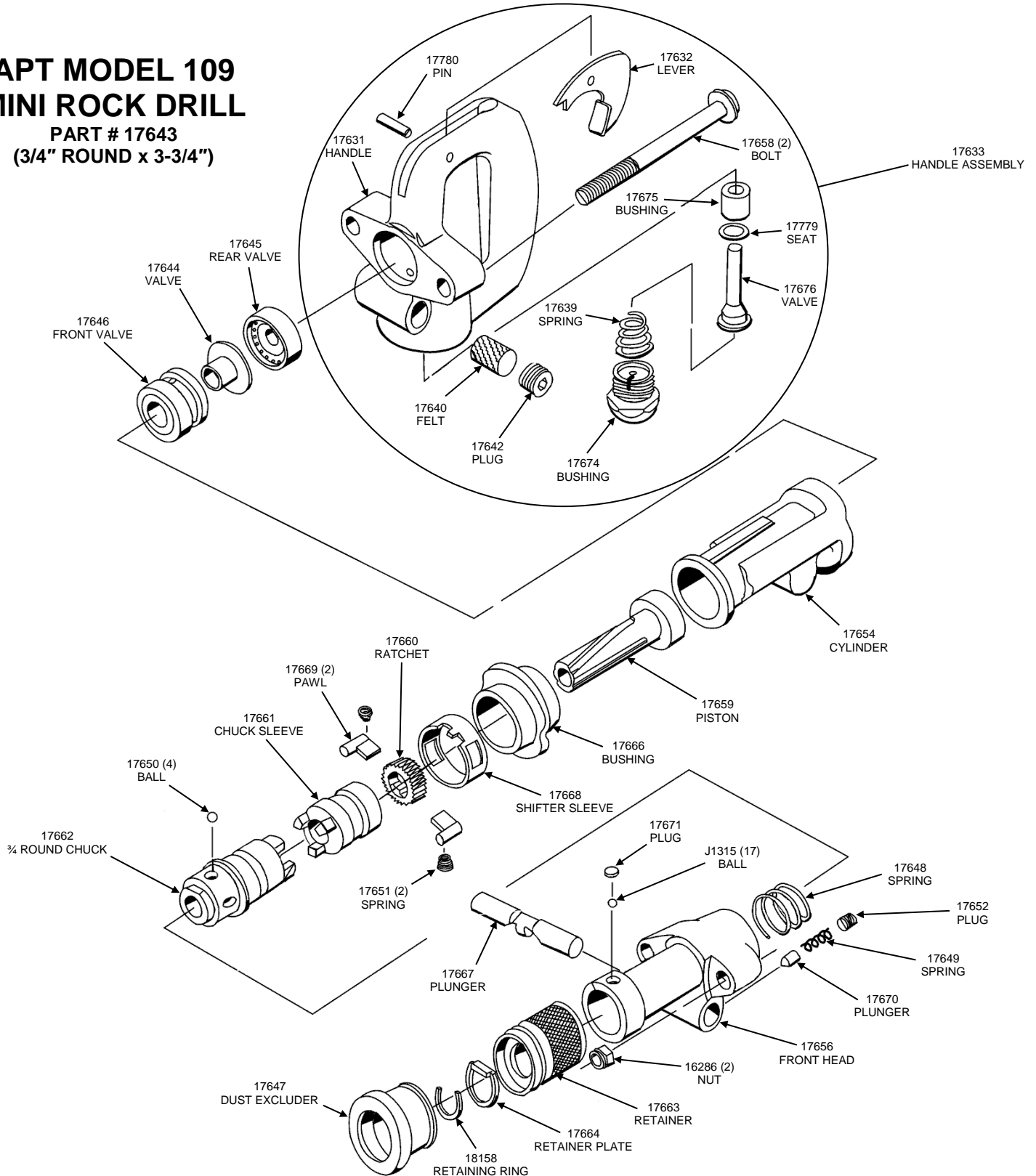




American Pneumatic Tools

APT MODEL 109 MINI ROCK DRILL PART # 17643 (3/4" ROUND x 3-3/4")



For assistance in any sales, technical, maintenance or repair questions, please call APT @
Phone: (800) 532-7402 or (714) 285-2828 • Fax: (800) 715-6502 or (714) 285-2829
1000 S. Grand Ave, Santa Ana, CA 92705

Website: www.apr-tools.com • e-mail: info@apr-tools.com

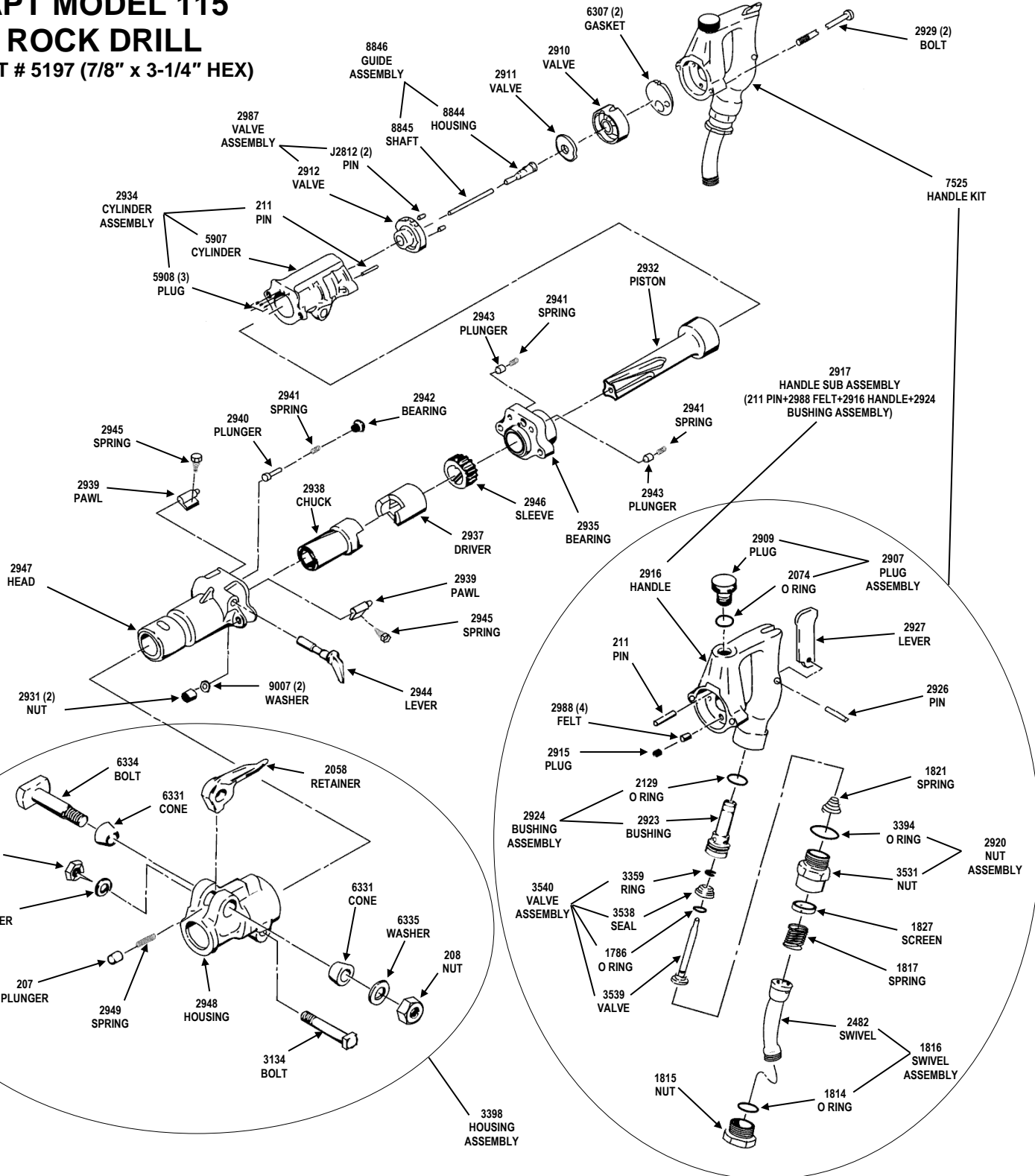
TDS-1030 Rev B

© 2017 AMERICAN PNEUMATIC TOOLS a business unit within: Construction Equipment North America LLC.



American Pneumatic Tools

APT MODEL 115 ROCK DRILL PART # 5197 (7/8" x 3-1/4" HEX)



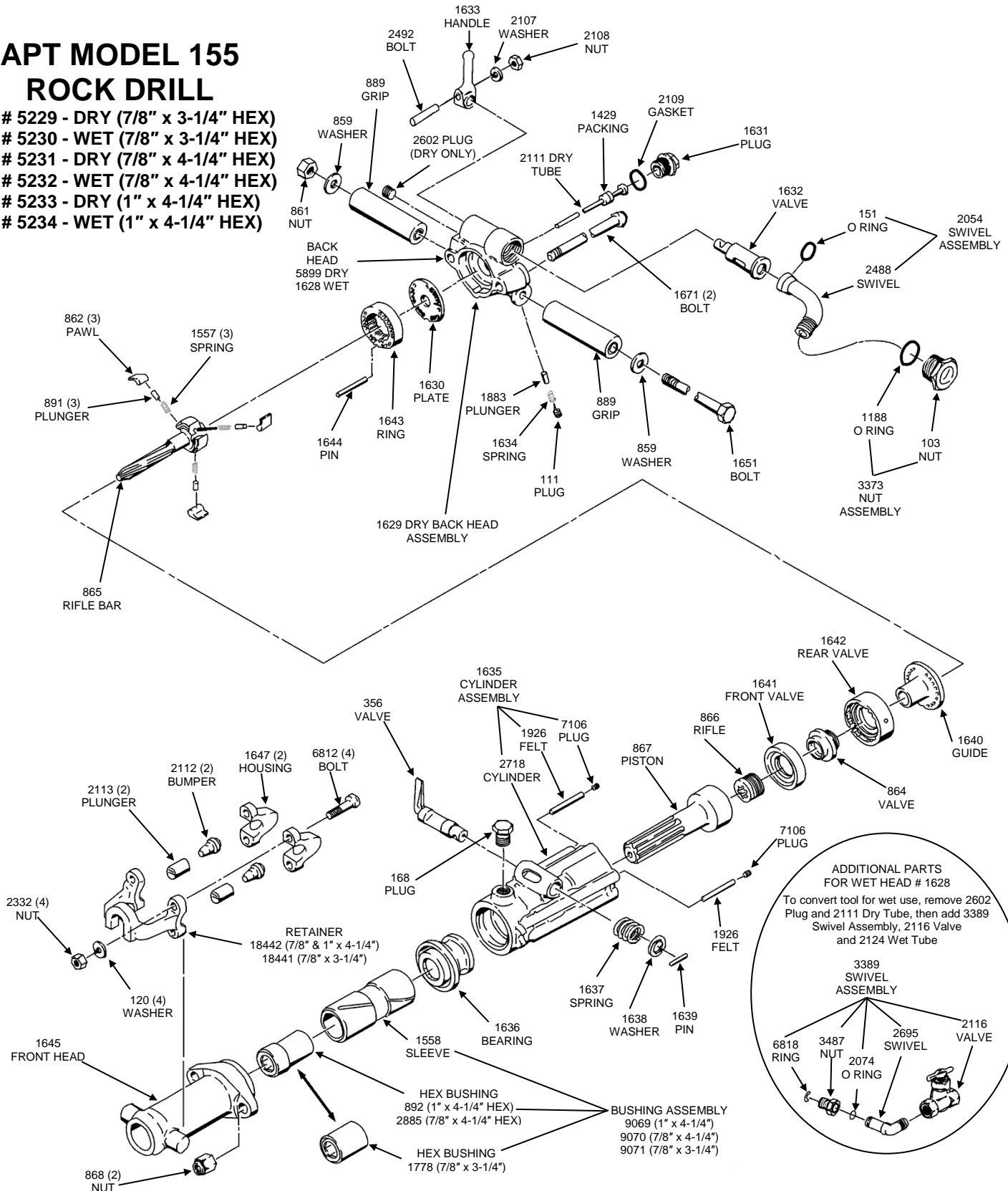
For assistance in any sales, technical, maintenance or repair questions, please call APT @
 Phone: (800) 532-7402 or (714) 285-2828 • Fax: (800) 715-6502 or (714) 285-2829
 1000 S. Grand Ave, Santa Ana, CA 92705



American Pneumatic Tools

APT MODEL 155 ROCK DRILL

- PART # 5229 - DRY (7/8" x 3-1/4" HEX)
- PART # 5230 - WET (7/8" x 3-1/4" HEX)
- PART # 5231 - DRY (7/8" x 4-1/4" HEX)
- PART # 5232 - WET (7/8" x 4-1/4" HEX)
- PART # 5233 - DRY (1" x 4-1/4" HEX)
- PART # 5234 - WET (1" x 4-1/4" HEX)



ADDITIONAL PARTS FOR WET HEAD # 1628

To convert tool for wet use, remove 2602 Plug and 2111 Dry Tube, then add 3389 Swivel Assembly, 2116 Valve and 2124 Wet Tube

3389 SWIVEL ASSEMBLY

- 6818 RING
- 3487 NUT
- 2074 O RING
- 2695 SWIVEL
- 2116 VALVE

For assistance in any sales, technical, maintenance or repair questions, please call APT @
 Phone: (800) 532-7402 or (714) 285-2828 • Fax: (800) 715-6502 or (714) 285-2829
 1000 S. Grand Ave, Santa Ana, CA 92705